

Practice 8-5

Angles of Elevation and Depression

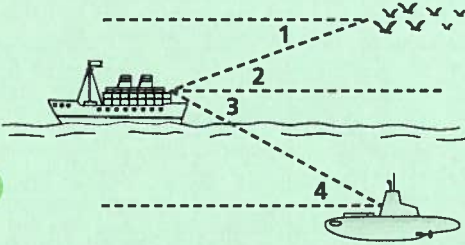
Describe each angle as it relates to the diagram.

1. a. $\angle 1$

b. $\angle 2$

c. $\angle 3$

d. $\angle 4$

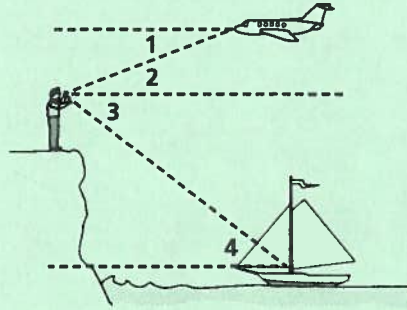


2. a. $\angle 1$

b. $\angle 2$

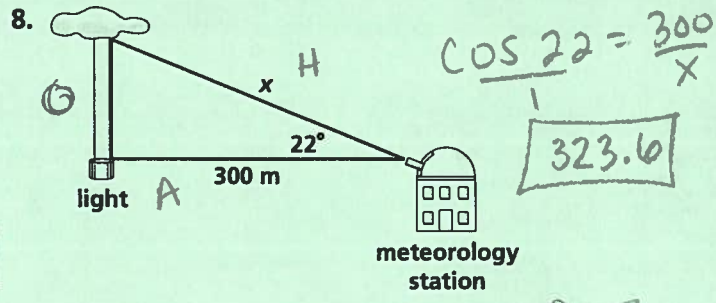
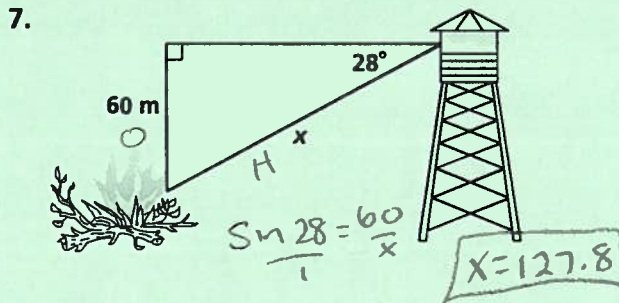
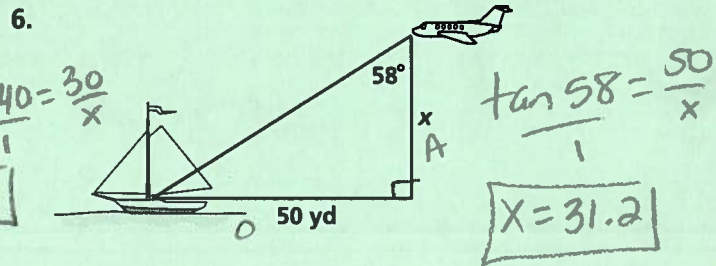
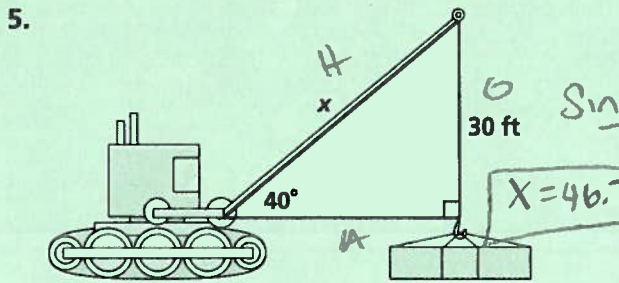
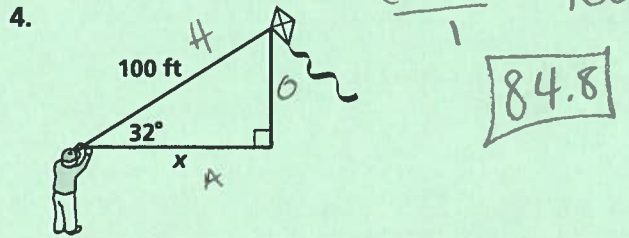
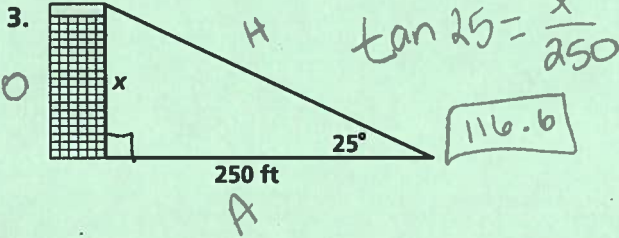
c. $\angle 3$

d. $\angle 4$



SOH CAH TOA

Find the value of x . Round the lengths to the nearest tenth.



9. A person standing 30 ft from a flagpole can see the top of the pole at a 35° angle of elevation.
- Draw a diagram.
 - The person's eye level is 5 ft from the ground. Find the height of the flagpole to the nearest foot.

